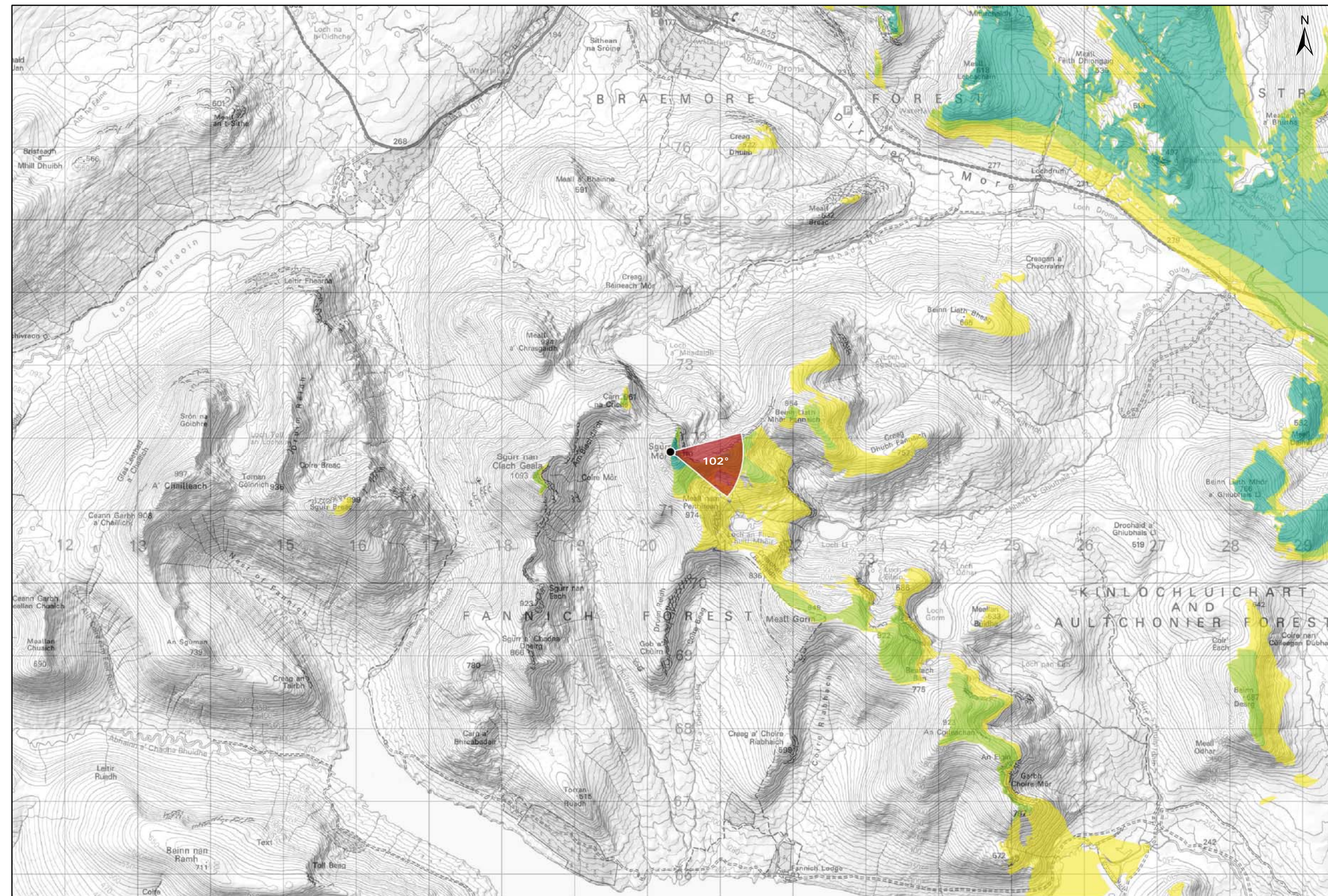


Viewpoint Location Plan Baseline Panorama  
Scale: 1:150,000



Viewpoint Location Plan  
Scale: 1:50,000 (Blade Tip ZTV)

**Note:**  
1. ZTV: Created using ESRI ArcGIS 10.5 software using the following data and parameters:  
Blade tip height: 133m  
DTM Data: OS Terrain 5 DTM. Resampled to a 10m grid.  
Observer height: 2m  
No surface features, such as buildings or trees, were included in the analysis.  
Earth curvature and light refraction has been included in calculations.

- Legend:**
- Proposed Turbines
  - Viewpoint Location
  - 90° Field of View Viewpoint
  - 53.5° Field of View Viewpoint

- Cumulative Wind Turbines
- Wind Farm Status (01/10/2018)  
Wind Farm Status (01/10/2018)
- Wind Farm Status (01/10/2018)  
Operational: Under Construction
- Zone of Theoretical Visibility
- No. of Turbines (133m) Visible



Blade Tip:	133m
DTM:	OS T5
DTM resolution:	5m
Observer height:	2m
Surface features:	Excluded
Earth curvature:	Included

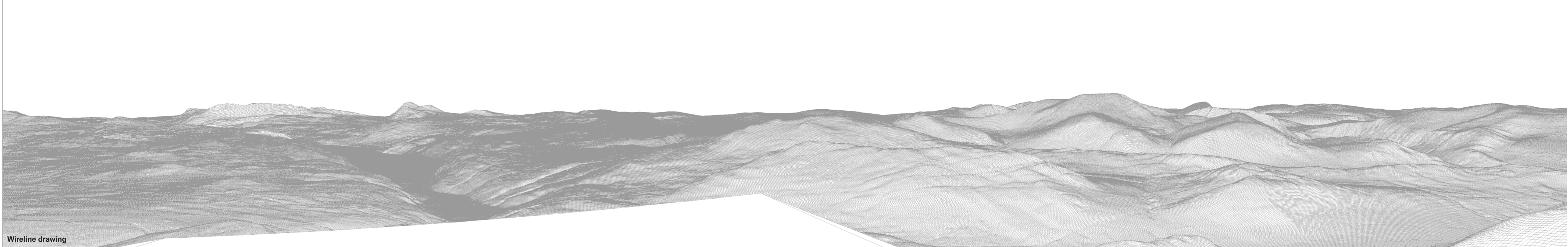
<b>Title:</b> Figure 9.27a Viewpoint 7: Sgurr Mor	
Lochluichart Wind Farm Extension II	
<b>Source:</b> © Crown copyright and database rights (2016) OS (license No 0100031673)	
<b>Client:</b> Infinergy	
<b>Drawn by:</b> MJF	<b>Checked:</b> JW
<b>Date:</b> 15/10/2018	<b>Figure:</b> 9.27a
<b>Scale:</b>	<b>Revision No:</b> B





Baseline photograph

This image provides landscape and visual context only



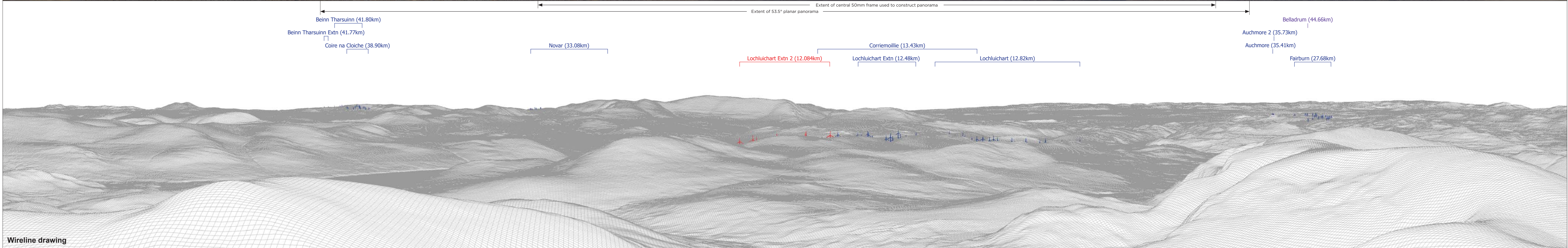
Wireline drawing

<b>OS reference:</b> 220317 E 871814 N	<b>Horizontal field of view:</b> 90° (cylindrical projection)	<b>Camera:</b> Canon EOS 6D	
<b>Eye level:</b> 1109.65 m AOD	<b>Principal distance:</b> 522 mm	<b>Lens:</b> 50mm (Canon EF 50mm f/1.4)	
<b>Direction of view:</b> 12°		<b>Camera height:</b> 1.5 m AGL	
<b>Nearest turbine:</b> 12.084 km		<b>Date and time:</b> 03/05/17 12:13	<b>Figure: 9.27b</b> <b>Viewpoint 7: Sgurr Mor</b>



Baseline photograph

This image provides landscape and visual context only



Wireline drawing

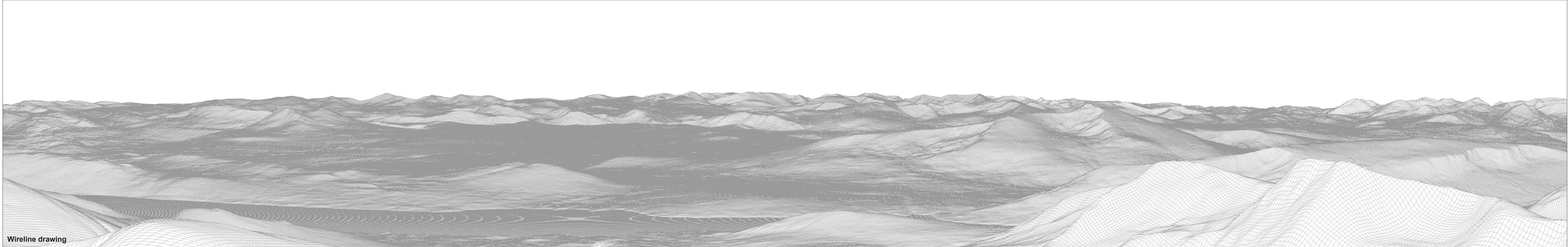
Figure: 9.27c  
Viewpoint 7: Sgurr Mor

<b>OS reference:</b>	220317 E 871814 N	<b>Horizontal field of view:</b>	90° (cylindrical projection)	<b>Camera:</b>	Canon EOS 6D
<b>Eye level:</b>	1109.65 m AOD	<b>Principal distance</b>	522 mm	<b>Lens:</b>	50mm (Canon EF 50mm f/1.4)
<b>Direction of view:</b>	102°			<b>Camera height:</b>	1.5 m AGL
<b>Nearest turbine:</b>	12.084 km			<b>Date and time:</b>	03/05/17 12:13



Baseline photograph

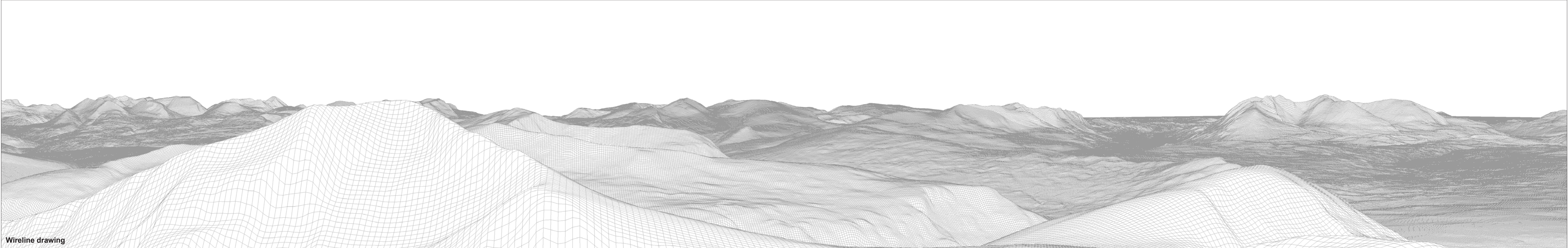
This image provides landscape and visual context only



Wireline drawing

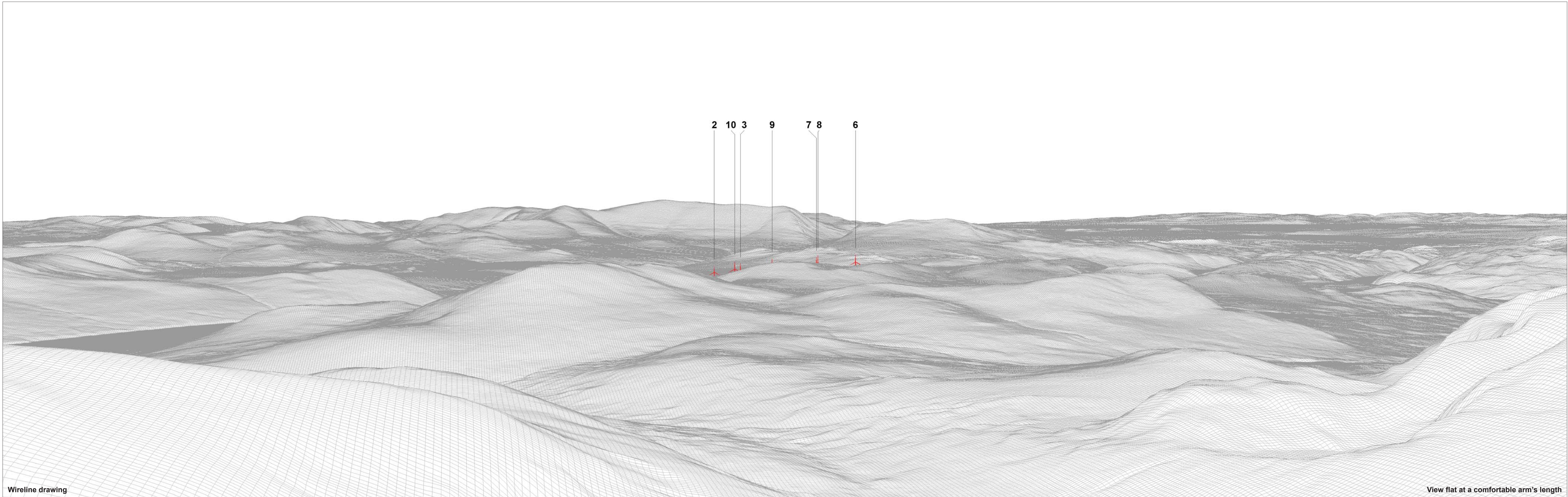
<b>OS reference:</b> 220317 E 871814 N	<b>Horizontal field of view:</b> 90° (cylindrical projection)	<b>Camera:</b> Canon EOS 6D
<b>Eye level:</b> 1109.65 m AOD	<b>Principal distance:</b> 522 mm	<b>Lens:</b> 50mm (Canon EF 50mm f/1.4)
<b>Direction of view:</b> 192°		<b>Camera height:</b> 1.5 m AGL
<b>Nearest turbine:</b> 12.084 km		<b>Date and time:</b> 03/05/17 12:13

**Figure: 9.27d**  
**Viewpoint 7: Sgurr Mor**



<b>OS reference:</b>	220317 E 871814 N	<b>Horizontal field of view:</b>	90° (cylindrical projection)	<b>Camera:</b>	Canon EOS 6D
<b>Eye level:</b>	1109.65 m AOD	<b>Principal distance</b>	522 mm	<b>Lens:</b>	50mm (Canon EF 50mm f/1.4)
<b>Direction of view:</b>	282°			<b>Camera height:</b>	1.5 m AGL
<b>Nearest turbine:</b>	12.084 km			<b>Date and time:</b>	03/05/17 12:13

**Figure: 9.27e**  
**Viewpoint 7: Sgurr Mor**



Wireline drawing

View flat at a comfortable arm's length

<b>OS reference:</b> 220317 E 871814 N	<b>Horizontal field of view:</b> 53.5° (planar projection)	<b>Camera:</b> Canon EOS 6D
<b>Eye level:</b> 1109.65 m AOD	<b>Principal distance:</b> 812.5 mm	<b>Lens:</b> 50mm (Canon EF 50mm f/1.4)
<b>Direction of view:</b> 102°	<b>Paper size:</b> 841 x 297 mm (half A1)	<b>Camera height:</b> 1.5 m AGL
<b>Nearest turbine:</b> 12.084 km	<b>Correct printed image size:</b> 820 x 260 mm	<b>Date and time:</b> 03/05/17 12:13

**Figure: 9.27f**  
**Viewpoint 7: Sgurr Mor**



Photomontage (operational turbines have been montaged in this view)

View flat at a comfortable arm's length

<b>OS reference:</b> 220317 E 871814 N	<b>Horizontal field of view:</b> 53.5° (planar projection)	<b>Camera:</b> Canon EOS 6D
<b>Eye level:</b> 1109.65 m AOD	<b>Principal distance:</b> 812.5 mm	<b>Lens:</b> 50mm (Canon EF 50mm f/1.4)
<b>Direction of view:</b> 102°	<b>Paper size:</b> 841 x 297 mm (half A1)	<b>Camera height:</b> 1.5 m AGL
<b>Nearest turbine:</b> 12.084 km	<b>Correct printed image size:</b> 820 x 260 mm	<b>Date and time:</b> 03/05/17 12:13

**Figure: 9.27g**  
**Viewpoint 7: Sgurr Mor**